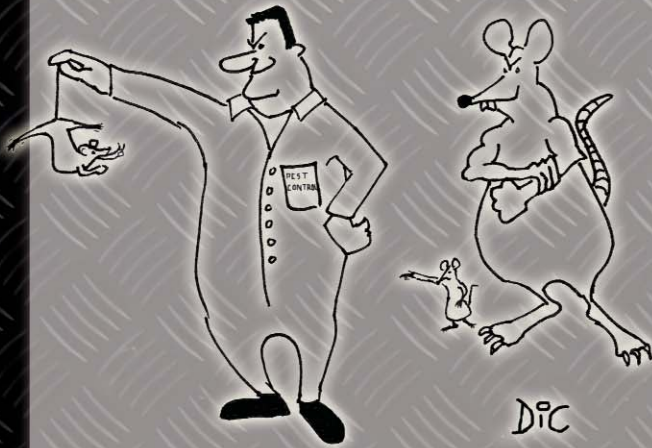


# So you want to become a Pest Controller?



Make sure you know what you're doing, or you could find yourself in a lot of bother!

Let the NPTA get you started... properly.

Read on for further details



For further information on the NPTA's "Introduction To Pest Control Weekend Workshop"

contact Julie or Margaret

Telephone – 01949 81133

Fax – 01949 823905

Email – [office@npta.org.uk](mailto:office@npta.org.uk)



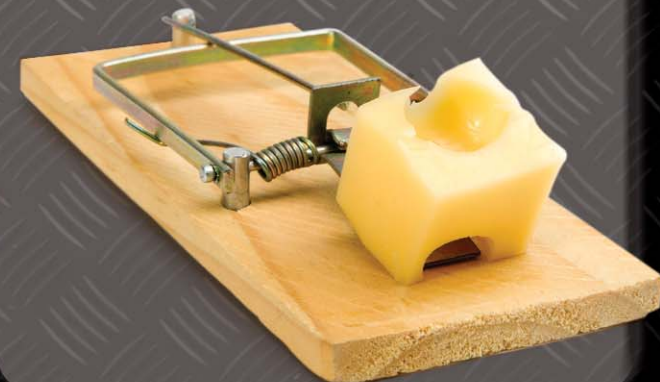
National Pest Technicians Association  
NPTA House, Hall Lane, Kinoulton, Nottingham, NG12 3EF

Telephone – 01949 81133 Fax – 01949 823905

Email – [office@npta.org.uk](mailto:office@npta.org.uk)



# So you want to become a Pest Controller?



**Pest control is a very practical job, so it is best learnt 'on the job' under the guidance of an experienced person. You can then learn the essential 'book' knowledge that goes with the practical work as you go along.**

This support should be available if you are employed by a pest control company – ideally one that is a Member of the National Pest Technicians Association. At a suitable point in your training, you should then attend an RSPH course in Pest Management, which leads to the RSPH Level II Award in Pest Management, if you are successful in passing the exam. This is regarded as the 'entry level' qualification for someone involved in this work. You can then progress to the Level II Certificate in Pest Management and to a variety of Level III qualifications, if you so choose.



*That's in the perfect world of course...*

The reality is often different. You may wish to specialise in particular aspects of pest control, such as mole trapping, wasp nest destruction or bird proofing, in which case much of the RSPH qualifications will be an expensive irrelevance. You may not be able to get a job with a pest control company and would prefer to work for yourself from the start. You may not be able to afford the full RSPH course all at once, or be prepared to invest so much before you have tried things out. After all, you may find that you do not like the work.

Going straight into an RSPH course could therefore be an expensive mistake. It is certainly not an easy option, especially if you have done little or no practical pest control before. Pest control may not be as easy as you think. Passing an exam first time, when perhaps you haven't sat one for a few years, can also be very difficult.

You do have to be legally 'competent' to use many of the products that pest controllers use, however. If you start without suitable training and something goes wrong, you could be in serious trouble.

*So we've come up with a solution to this dilemma.*



A weekend's introduction to the industry that is designed to help you choose what you need to do next. As it will cover how to use pesticides safely, afterwards you'll also be able to order and use most of the products you need with sufficient competence to be legal.

We'll introduce you to the Laws controlling what we do; we'll introduce you to the more common pests to give you a start; we'll introduce you to the suppliers who can help you with technical support as well as products; we'll even point you in the direction of experienced mentors who you can turn to when you have a practical problem.

We'll do this over a weekend, so you don't have to take time off work and we'll have time for informal discussions with some experienced pest controllers when we're not in the classroom.

Of course, it will only be a starting point and we hope that when you're ready, you'll come back and go through our RSPH Level II Course and exam in Pest Control – but only when you're good and ready.

